

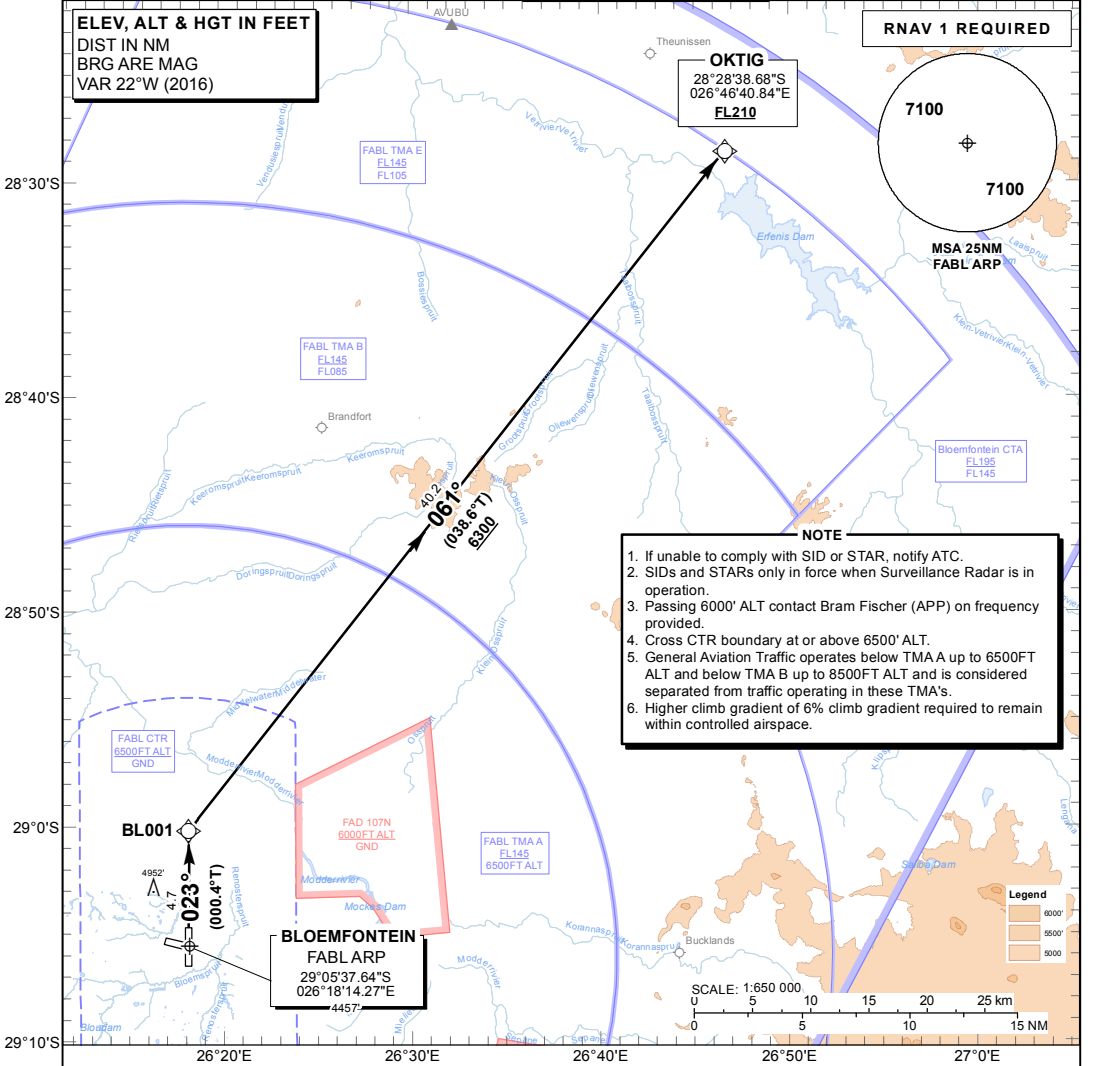
**STANDARD DEPARTURE  
CHART -  
INSTRUMENT  
(SID)**

TRANSITIONAL ALTITUDE  
**8000'**  
TRANSITIONAL LEVEL  
**ATC**

APP: 124.30  
APP E: 124.30  
APP W: 119.40  
TWR: 120.80  
ATIS: 126.45



**BLOEMFONTEIN  
(BRAM FISCHER INTL)  
RNAV (GNSS) RWY 02  
OKTIG 1B**



**NOTE**

1. If unable to comply with SID or STAR, notify ATC.
2. SIDs and STARs only in force when Surveillance Radar is in operation.
3. Passing 6000' ALT contact Bram Fischer (APP) on frequency provided.
4. Cross CTR boundary at or above 6500' ALT.
5. General Aviation Traffic operates below TMA A up to 6500FT ALT and below TMA B up to 8500FT ALT and is considered separated from traffic operating in these TMA's.
6. Higher climb gradient of 6% climb gradient required to remain within controlled airspace.

CHANGE: Procedure text revised	<p><b>OKTIG 1B: RWY 02</b></p>	<p><b>Climb to FL140. Maintain RWY track to BL001, turn right and route to OKTIG. Further climb will be under Radar Control. At OKTIG set course as per flight plan.</b></p> <p><b>Climb gradient restricted to a minimum of 6.0% until BL001</b></p> <p>6.0% @ 140KT IAS = 851 FPM 6.0% @ 180KT IAS = 1094 FPM 6.0% @ 220KT IAS = 1337 FPM</p>
		<p><b>COMMUNICATION FAILURE PROCEDURE (Squawk 7600)</b></p> <p>Comply with the OKTIG 1B RNAV (GNSS) SID, climbing to FL210.</p> <p>Aircraft wishing to return to Bram Fischer INTL Airport must continue to OKTIG. At OKTIG, turn right to UTONU, and enter the UTONU RNAV (GNSS) hold at FL200 for a minimum of 5 MIN. Comply with the "After UTONU" 1A STAR RWY 02 Communication Failure Procedure.</p>